

The background features a stylized graphic with a light blue and white color palette. It includes a smiling face with a crescent-shaped mouth, a large number '1', and a hashtag symbol '#'. The entire graphic is set within a circular frame with a red border, all on a dark blue background.

Kroger Co. Store 435

Energy Projects

- Proven Technology.
- Straightforward Application.
- Consistent w/ Store Design.
- Adequate Return on Investment.
- Supports Positive Customer Experience in Store.



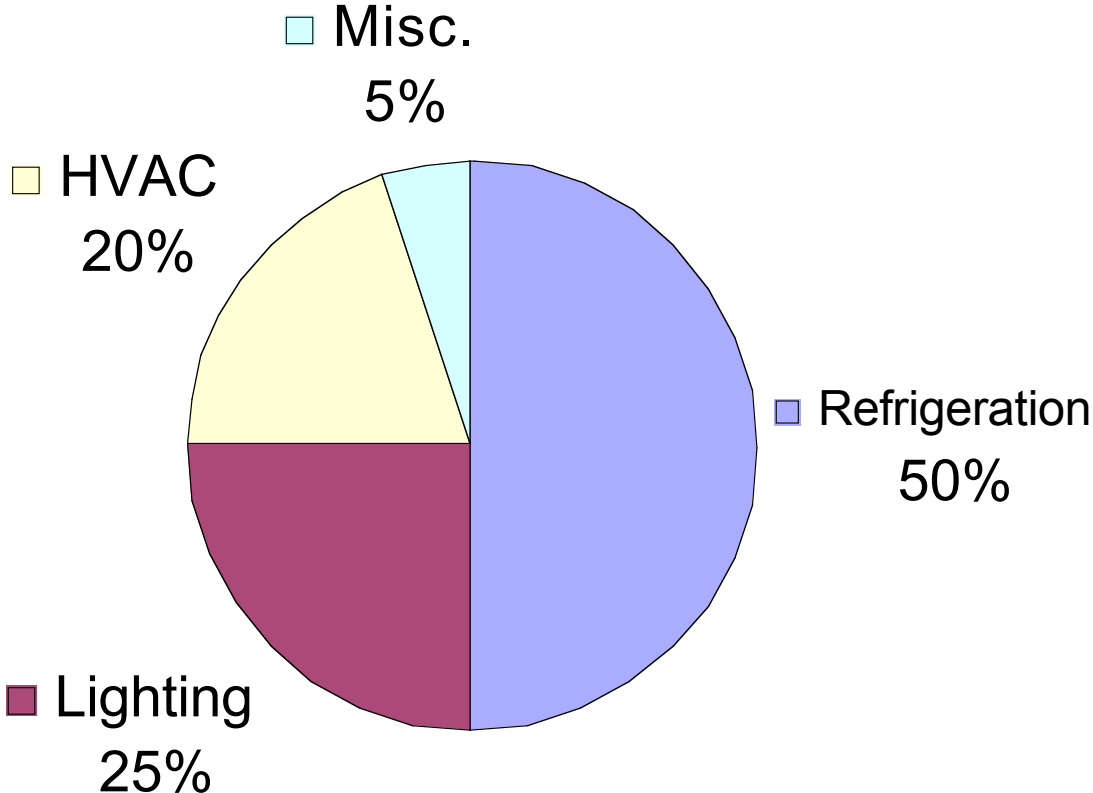


PHARMACY
← DRIVE-THRU

Kroger

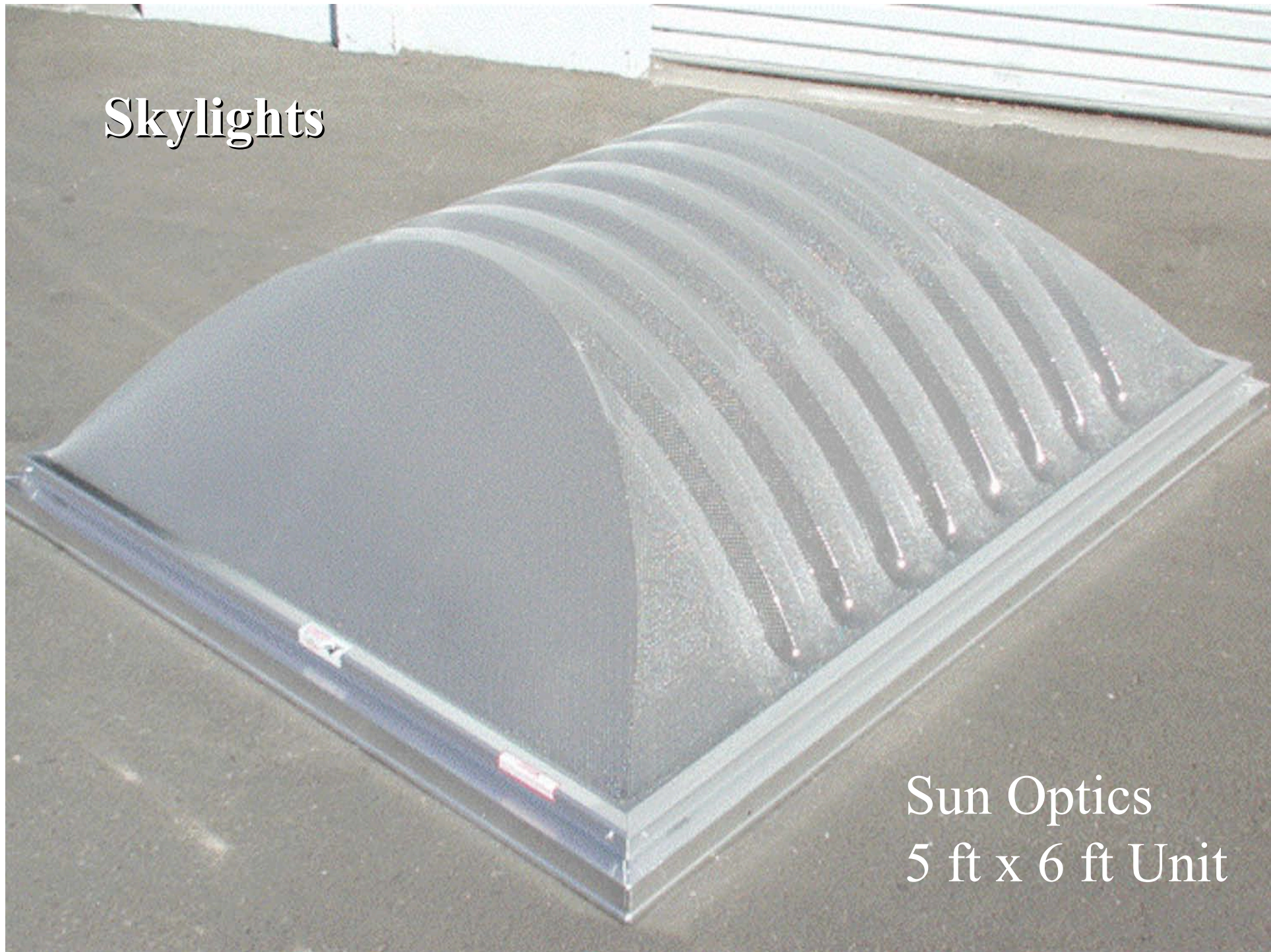
Pharmacy

Electricity Usage - Typical Kroger





Skylights



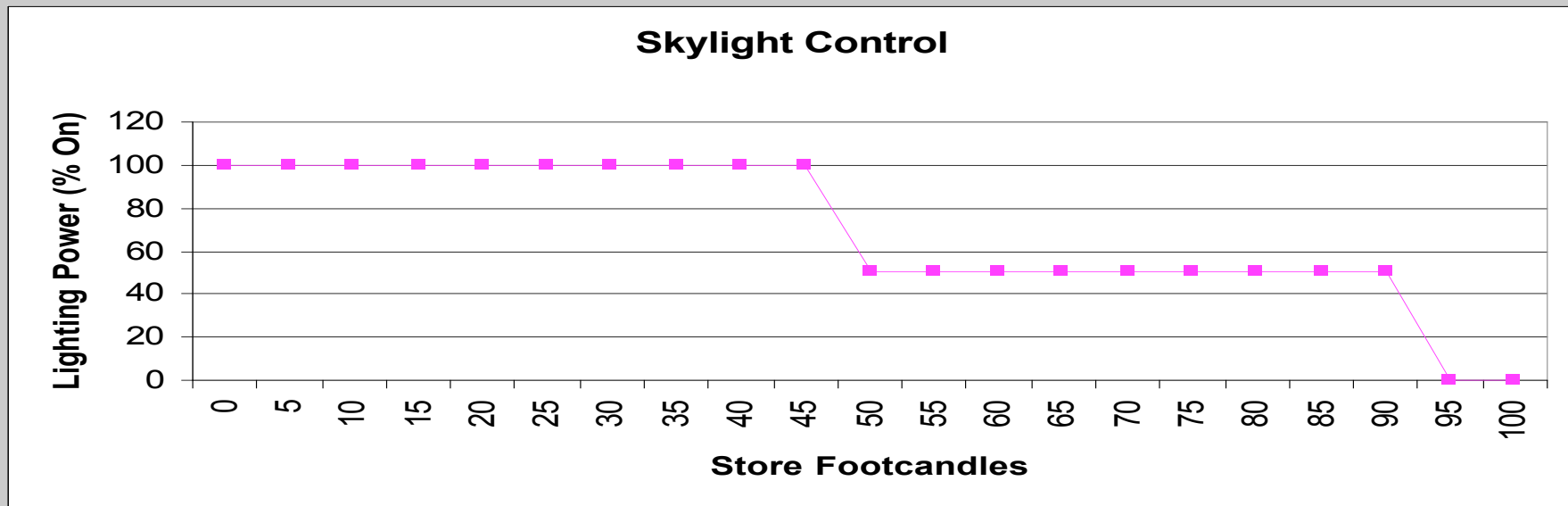
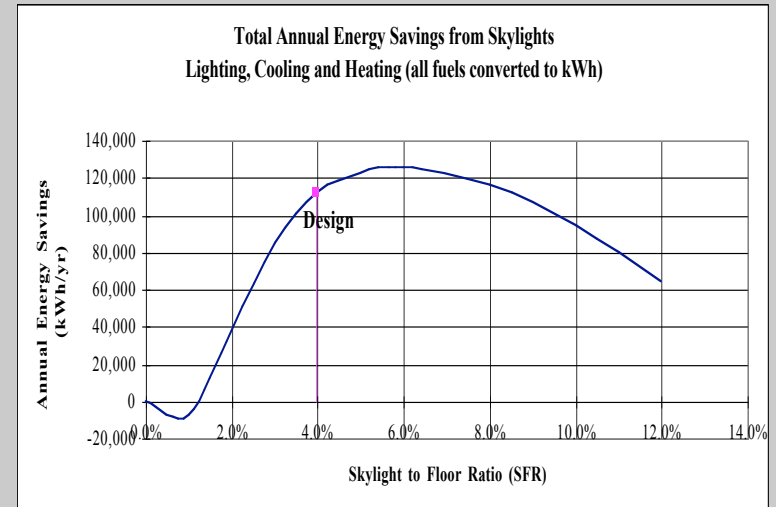
Sun Optics
5 ft x 6 ft Unit

Skylights

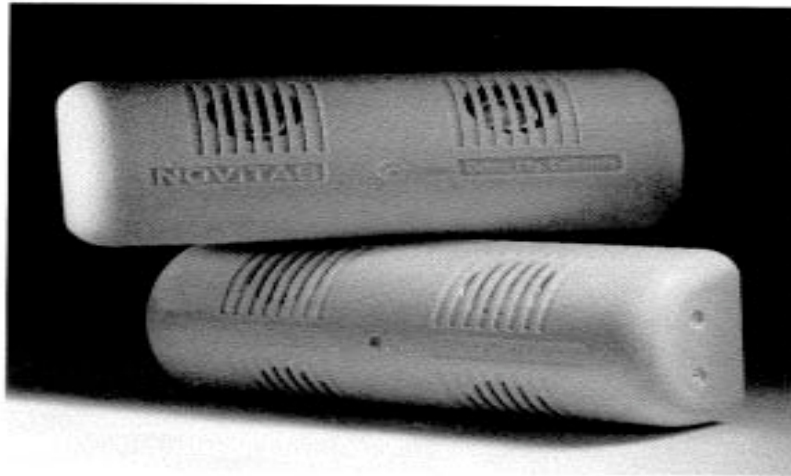
Skylights

– For a 58k Store:

- Approximately 55 Skylights
- Installed cost is \$31,900 (\$0.55/sqft)
- Energy Savings is \$6,371/Skylight to Floor Ratio of 4%
- Two-Level Switching
 - 90 fc, 45 fc, 0 fc



Occupancy Sensor Control



Models 01-060, 01-072, 01-074, 01-076, 01-170

Housing: 1-5/8" x 2-5/16" x 6-1/8" HDW.

Models 01-082, 01-083, 01-084, 01-091, 01-092,
01-094

Housing: 1-5/8" x 2-5/16" x 6-1/8" HDW.







13

EXPRESSIONS
Season

13

SAVE

SAVE

18% Off
Kroger
Books

Magazines

Magazines

Magazines



The light bulbs
magazines are
lanes are called
fluorescents.
longer and use
than regular bulbs
another exam
Kroger stores s



The light bulbs over the magazines and check lanes are called "compact fluorescents." They last longer and use less energy than regular bulbs. It's just another example of how Kroger stores save energy!



We are committed to serving you and to safeguarding the environment.



8/5/07

12





16

POTATOES

Hormel  PEPPERONI

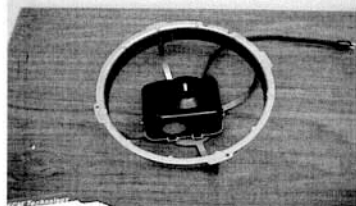
SAVE
on the
quality
of the
pizza

Display of Hormel Pepperoni pizzas and other products. The display includes several shelves of Hormel Pepperoni pizzas in various sizes and flavors, including Pepperoni, Pepperoni & Sausage, and Pepperoni & Bacon. Below the pizzas are shelves of other products, including Hormel Sausage and Hormel Bacon.



The ECM 58 Series Fan/Motor System is GE's most efficient and versatile fan/motor system for air moving applications. In addition to its ultra-high efficiency and quiet design, the ECM 58 Series is easy to install making it the perfect choice to replace your existing or worn out 44 or 51 frame shaded pole motor.

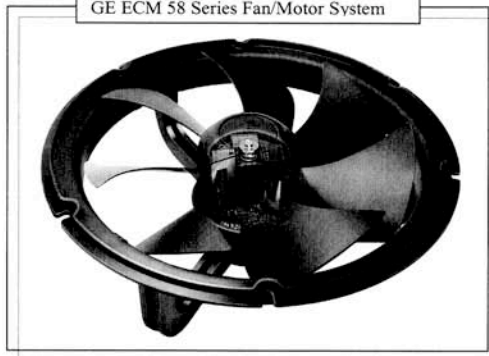
Traditional 44 Frame Motor



Traditional 51 Frame Motor

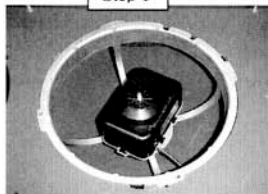


GE ECM 58 Series Fan/Motor System



Replacement Instructions

Step 1



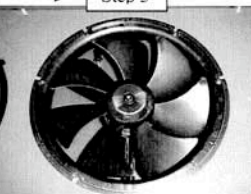
- Remove screws from perimeter of shroud

Step 2



- Remove shroud with 44 frame motor still attached

Step 3



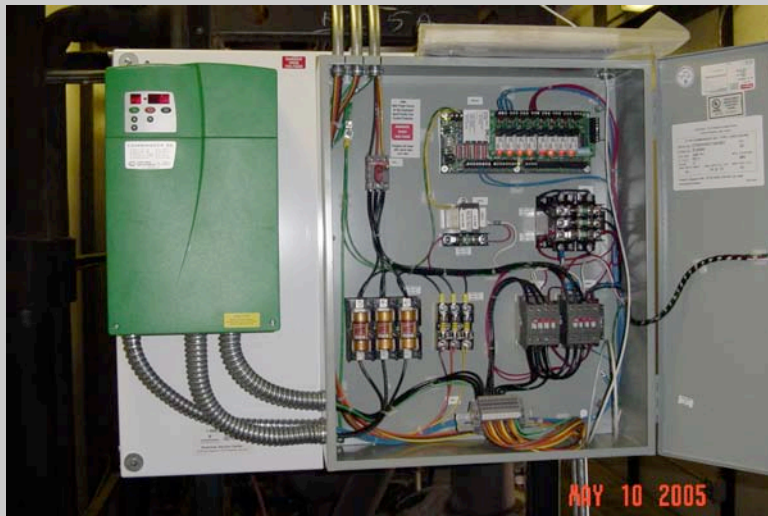
- Replace with ECM 58 Series Fan/Motor System







Variable Speed Drives



Anti-Sweat Heater Control



8/5/07





SWITCH
ON
when entering

SWITCH
OFF
when leaving

SAVES



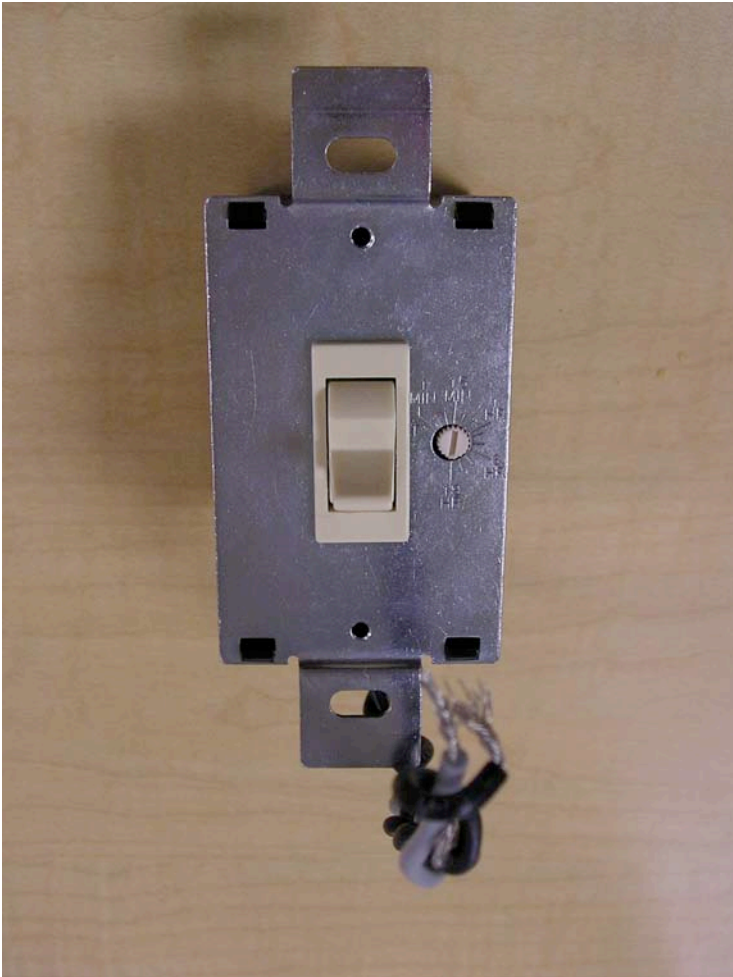
**CLOSE
DOOR**

SAVES



THINK SAFETY

Paragon Switch Timers



Future Projects?

- LED Lighting – many applications.
- More ECM's – larger HP.
- More aggressive lighting setback.
- “White Roofs.”
- PV Solar Array?
- New Technologies.
- Don't forget the Basics.



The background features a stylized graphic with a light blue and white color palette. It includes a smiling face with a crescent-shaped mouth, a large number '1', and a hashtag symbol '#'. The entire graphic is set within a circular frame with a red border, all on a dark blue background.

Kroger Co. Store 435