

MELINK[®]

New Green Headquarters



Background

- Founded in 1987 by Steve Melink
- Operated in 3 separate buildings in 2004
- Decided to consolidate and expand

MELINK®

Products & Services



HVAC commissioning services
for restaurant & retail chains.

MELINK®

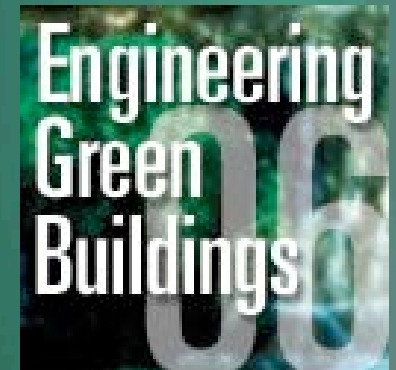
Products & Services



Variable-speed
controls for
kitchen hoods

Going Green

- Attended EGB 2004 to learn about LEED.
- Considered an opportunity to ‘walk the talk’
- Turned into a personal call to action.



Justification For Going Green

- Financial
- National Security
- Environment

Building Orientation & Layout

- Faces south to maximize day-lighting and free heat during the winter



Building Envelope

- High-performance roof, walls, and windows



Natural Lighting

- Exterior & interior windows maximize day-lighting
- Low-profile workstations allow light to fill office.



Electric Lighting

- Infrared sensors turn off lights when rooms are vacant
- Light sensors turn off lights when daylight is adequate



Geothermal Heat Pumps

- Geothermal systems are form of renewable energy.
- No fossil fuels for direct heating.



Solar Power

- Solar panels collect energy and net meter feeds power back to the grid on weekends.



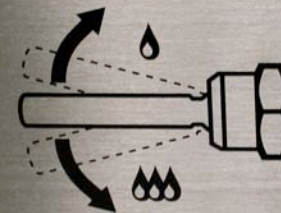
Water Efficiency

- Sinks have sensors for automatic on/off operation.
- Waterless urinals and toilets with dual-flush capability reduce water use.



Water-Saving Dual-Flush Handle

UP for liquid waste



DOWN for solid waste

By installing this water-saving Dual Flush Handle, this facility has demonstrated its commitment to protecting/preserving the environment. For the system to work, we need your help. Please take a look at the diagram above and push the handle in the direction which best suits your needs. With your assistance, together we can do our part to conserve this precious resource.



SLOAN.

Living Green

- Fleet of hybrid cars for regional supervisors.



Cost of Going Gold

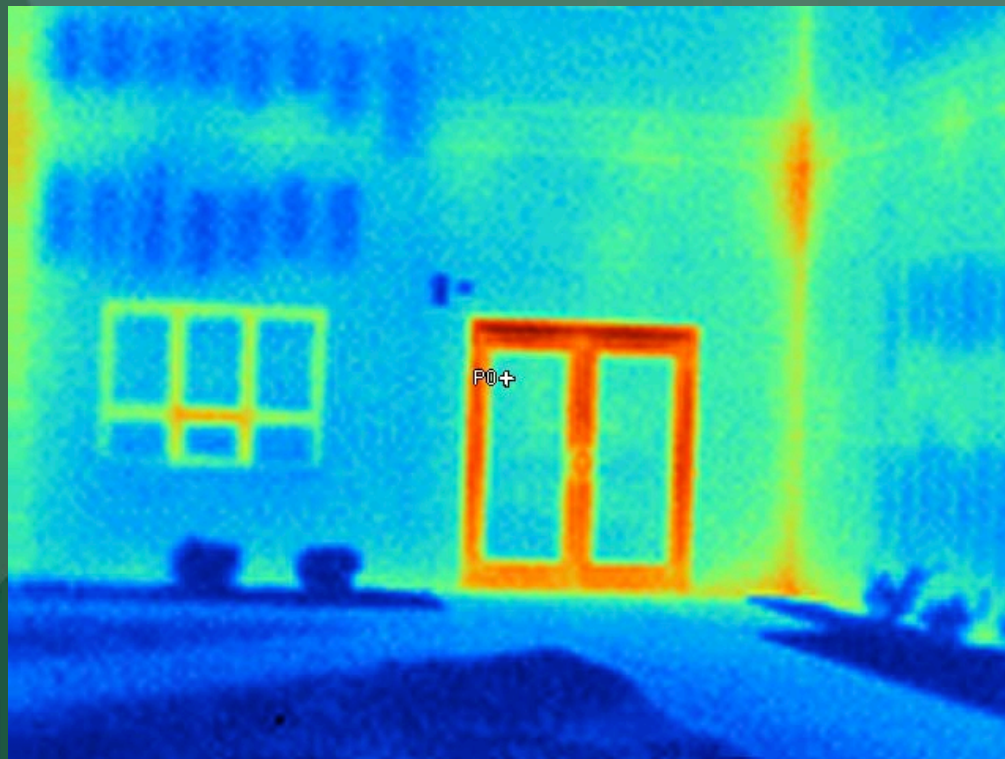
- 10% of total project cost or \$250,000
- Rolled additional cost into long term commercial building loan to achieve positive cash-flow
- Received \$40,000 state rebate for PV system and \$50,000 federal tax deduction for total savings

Building Performance Data

- According to BOMA, the average office building operates at cost of \$2.00 per square foot per year.
- Melink operated at only \$0.67 per square foot per year in 2006 (first year of operation).
- Therefore we are saving up to \$30,000 per year in energy costs or almost \$100 per day.

MELINK®

Energy Weak Link – Door Frames



Grand Opening

- Keynote speaker was USGBC Chair Kevin Hydes
- Also Governor Bob Taft and 250 others attended



Grand Opening

- Won respect of employees, customers, vendors, and industry in general



Future Goals

- Continue to optimize building systems and squeeze out every amp possible.
- Become a zero-energy building within 5 years. Become first LEED-EB Platinum in Ohio.
- Upgrade home to zero-energy status within 5 years.

MELINK®

Why Am I So Passionate?



MELINK®

One Lifetime To Get It Right!

